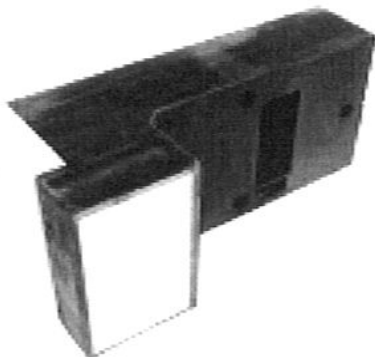


MARCOTHERM ELEMENTO DI FISSAGGIO ESTERNO SPALLETTA K1-PH

MARCOTHERM EXTERNAL JAMB FASTENING ELEMENT K1-PH
Code EFESTSPxx

DESCRIPTION



MTH ELEMENTO DI FISSAGGIO ESTERNO SPALLETTA K1-PH is made of black coloured rigid polyurethane foam that is not subject to decay. It is reinforced with two phenolic resin plates immersed in the foam.

DIMENSIONS

Types:	80- 300 mm
Bonding surface:	280 x 125 mm
Phenolic resin plate:	117 x 65 mm
Useful surface:	105 x 45 mm
PU specific gravity:	200 kg/m ³

MECHANICAL FIXING

Screws:	Fischer FUR 8x100T
Perforation diameter:	8 mm
Min. perforation depth:	86 mm
Min. anchoring depth:	70 mm
Tool connection:	Torx T30

APPLICATION

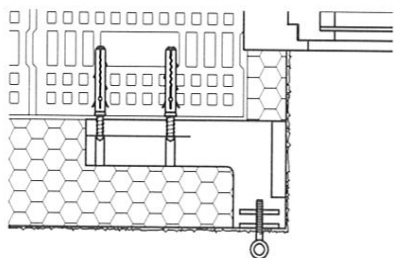
The MTH ELEMENTO DI FISSAGGIO ESTERNO SPALLETTA K1-PH external jam fixing element is especially suited for medium weight external elements, without heat bridge, in Thermal Insulation Composite Systems made of expanded polystyrene (EPS) or mineral wool (MW).

It can be covered with commercially available plasters and thin-set mortars without any preparation.

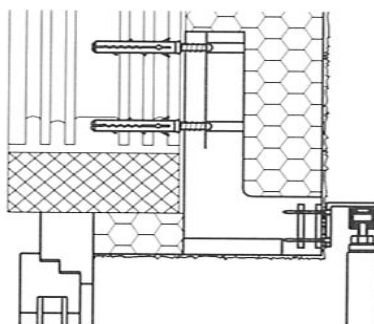
The MTH ELEMENTO DI FISSAGGIO ESTERNO SPALLETTA K1-PH external jam fixing element has a limited resistance to UV rays; protection for the duration of the construction is however not fundamental.

The mounting of external elements without thermal bridge is allowed, for example, in: shutter hinges, guides for sliding blinds, parapets in the corners of buildings.

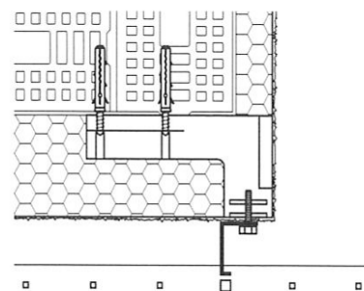
Shutter hinges (rod and screw hinges)



Guides for sliding blinds



Mounting of parapets in the corners of buildings



MARCOTHERM ELEMENTO DI FISSAGGIO ESTERNO

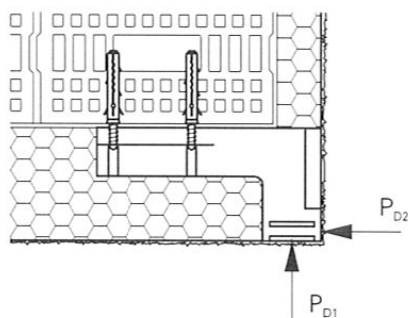
SPALLETTA K1-PH

MARCOTHERM EXTERNAL JAMB FASTENING ELEMENT K1-PH
Code EFESTSPxx

TECHICAL INFORMATION

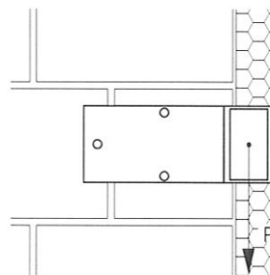
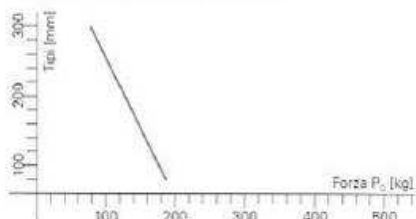
Thermal conductivity certificate of the PU: λ 0.04 W/mK
DIN 4102, May 1998: Class B2 fire rating
Tensile strength requirements of the adhesive by the base according to SIA: 0.25 N/mm² 2.5 kg/cm²

The adhesive tensile strength of the base must be determined by performing certain tests.
The entire surface must be glued.



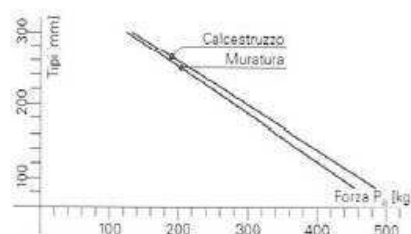
Allowable compression stress P_{D1}
On the phenolic resin plate: 5.3 kN

Allowable compression stress P_{D2}
On the phenolic resin plate:



Allowable shear stress P_Q
On the phenolic resin plate:

Spess.	Forza Muratura		Forza Calcestruzzo	
80 mm	4.4 kN	441 kg	4.7 kN	470 kg
100 mm	4.1 kN	412 kg	4.4 kN	439 kg
120 mm	3.8 kN	383 kg	4.1 kN	408 kg
140 mm	3.5 kN	354 kg	3.8 kN	377 kg
160 mm	3.3 kN	325 kg	3.5 kN	346 kg
180 mm	3.0 kN	296 kg	3.2 kN	315 kg
200 mm	2.7 kN	267 kg	2.8 kN	284 kg
220 mm	2.4 kN	238 kg	2.5 kN	253 kg
240 mm	2.1 kN	209 kg	2.2 kN	222 kg
260 mm	1.8 kN	180 kg	1.9 kN	191 kg
280 mm	1.5 kN	151 kg	1.6 kN	160 kg
300 mm	1.2 kN	122 kg	1.3 kN	129 kg



A value of 25 kg/5 cm for the reinforcing fabric was considered in the values seen above.

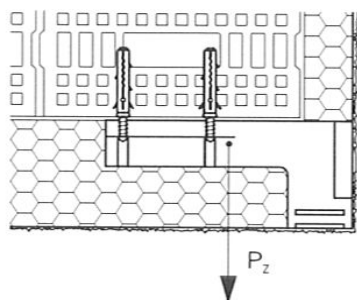
Colorificio San Marco Spa – Via Alta 10 – 30020 Marcon (VE), Italy – Tel +39 041 4569322 – Fax +39 041 5950153 – info@san-marco.it

san marco
SISTEMI VERNICIANTI PER L'EDILIZIA

MARCOTHERM ELEMENTO DI FISSAGGIO ESTERNO

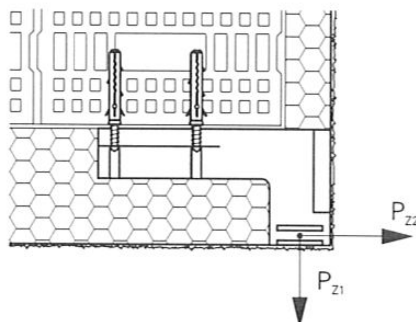
SPALLETTA K1-PH

MARCOTHERM EXTERNAL JAMB FASTENING ELEMENT K1-PH
Code EFESTSPxx



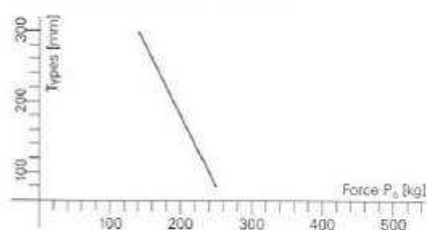
Allowable tensile stress P_z On the anchoring of

Masonry:	4.1 kN
Stress per screw:	0.4 kN
Bonding force:	2.9 kN
Concrete:	4.4 kN
Stress per screw:	0.5 kN
Bonding force:	2.9 kN

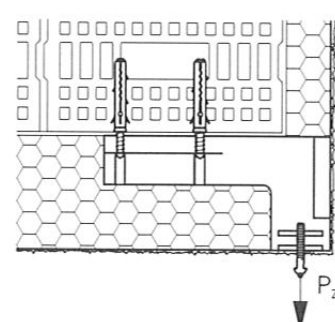


Allowable tensile stress P_{z1} On the phenolic resin plate: 2.2 kN

Allowable tensile stress P_{z2} On the phenolic resin plate:



A value of 25 kg/5 cm for the reinforcing fabric was considered in the values seen above.



Allowable tensile stress P_z on the fastening screws/bolts

Stress for M6 screws:	1.0 kN
Stress for M8 screws:	1.4 kN
Stress for M10 screws:	1.8 kN

MARCOTHERM ELEMENTO DI FISSAGGIO ESTERNO SPALLETTA K1-PH

MARCOTHERM EXTERNAL JAMB FASTENING ELEMENT K1-PH
Code EFESTSPxx

MOUNTING

It is recommended that MTH ELEMENTO DI FISSAGGIO ESTERNO SPALLETTA K1-PH be installed at the same time the insulation panels are glued.

Apply adhesive mortar to the bonding surface of the jamb.

The entire surface of the element's base must be completely covered. The consumption rate is 0.29 kg for each 5 mm thick layer.



Press the MTH ELEMENTO DI FISSAGGIO ESTERNO SPALLETTA K1-PH jamb into the milled section of the insulation panel until it is flush.



Once the adhesive mortar has hardened, apply the mechanical fixing screws.

Check that the supplied fixing screws for the base are appropriate. If not, they should be replaced with more suitable fixing screws.

Do not use the drill's limit stop when drilling in hollow block.



Cover the heads of the fixing screws with insulating material covered with adhesive mortar and press until flush with the rest of the insulating material.



MARCOTHERM ELEMENTO DI FISSAGGIO ESTERNO SPALLETTA K1-PH

MARCOTHERM EXTERNAL JAMB FASTENING ELEMENT K1-PH
Code EFESTSPxx

FINISHING WORK

Cover the fixing element with External Thermal Insulation Composite System.

Determine the exact position of the element by tapping on the plaster coat.

Fasten using only self-threading or metric screws.

Wood and self-tapping screws are not recommended.

Make a starter hole for metric screws:

M6	hole diameter	5.0 mm
M8	hole diameter	6.5 mm
M10	hole diameter	8.2 mm

Screw the object to be mounted in the MTH ELEMENTO DI FISSAGGIO ESTERNO SPALLETTA K1-PH jamb.

The screw depth into the bracket must be at least 26 mm. This ensures that the entire thickness of the phenolic resin plate is fastened correctly.



COLORIFICIO SAN MARCO guarantees that the information hereupon is provided to the best of its technical and scientific knowledge and based on its experience; nonetheless, the company may not be held liable for the results obtained using these products, as application conditions are beyond its control. It is recommended to always make sure that the product is suited to each specific instance. The present sheet voids and replaces any previously existing sheets. For further technical information contact technical service at +39 0414569322.

Colorificio San Marco Spa – Via Alta 10 – 30020 Marcon (VE), Italy – Tel +39 041 4569322 – Fax +39 041 5950153 – info@san-marco.it

**san
marco**
SISTEMI VERNICIANTI PER L'EDILIZIA